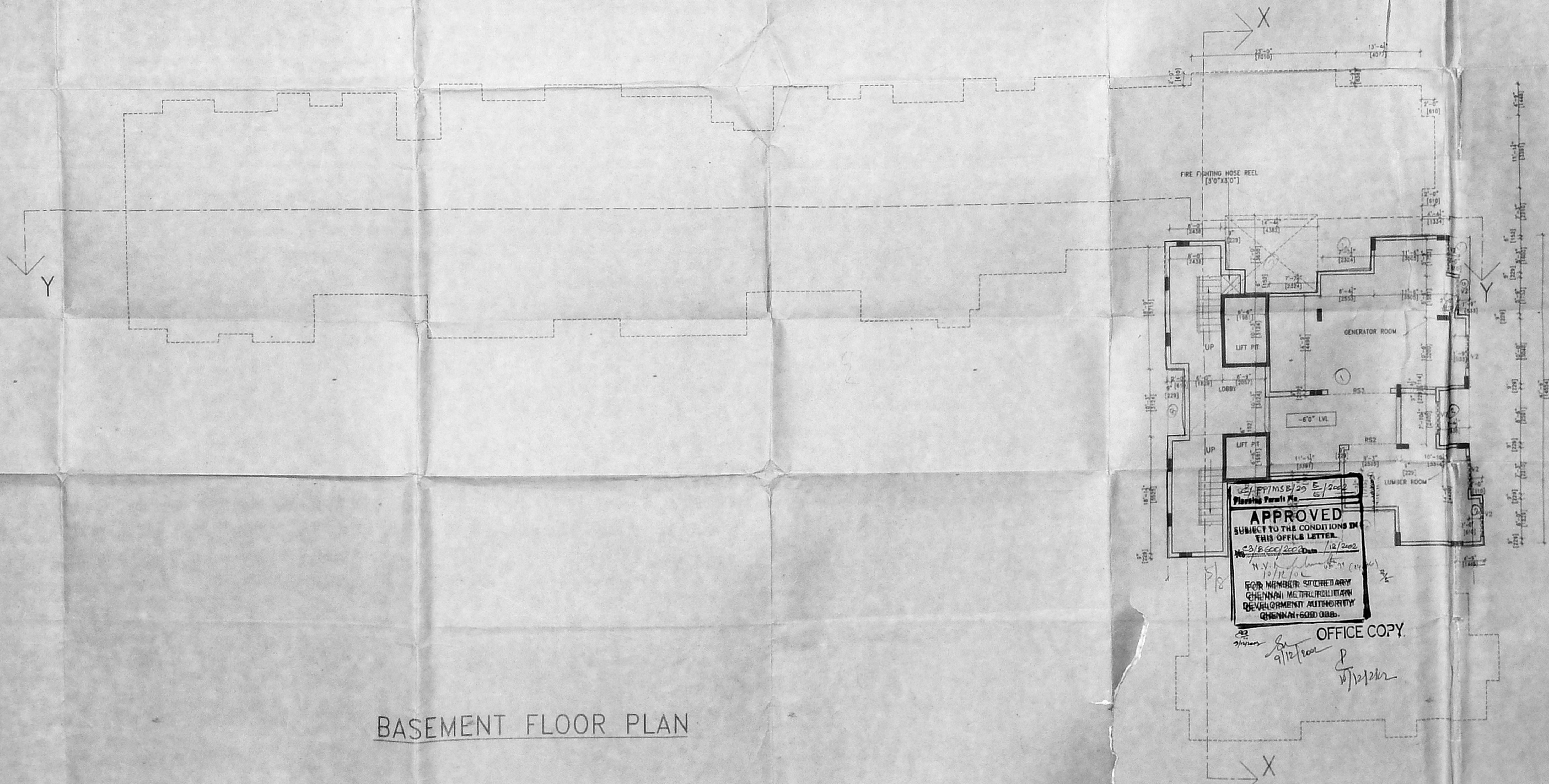


TERRACE FLOOR PLAN

PLAN AT LIFT MACHINE RM./WATER TANK LVL



BASEMENT FLOOR PLAN

APPROVED
SUBJECT TO THE CONDITIONS IN
THIS OFFER LETTER.
FOR MEMBER SECRETARY
CHENNAI METROPOLITAN
DEVELOPMENT AUTHORITY
CHENNAI-600 028.

OFFICE COPY

124.00202.00

Sl. No.	Description	Quantity	Unit
1	door	1	nos
2	door	1	nos
3	door	1	nos
4	door	1	nos
5	door cum window	1	nos
6	door cum window	1	nos
7	door cum window	1	nos
8	door cum window	1	nos
9	door cum window	1	nos
10	door cum window	1	nos
11	door cum window	1	nos
12	door cum window	1	nos
13	door cum window	1	nos
14	door cum window	1	nos
15	door cum window	1	nos
16	door cum window	1	nos
17	door cum window	1	nos
18	door cum window	1	nos
19	door cum window	1	nos
20	door cum window	1	nos
21	door cum window	1	nos
22	door cum window	1	nos
23	door cum window	1	nos
24	door cum window	1	nos
25	door cum window	1	nos
26	door cum window	1	nos
27	door cum window	1	nos
28	door cum window	1	nos
29	door cum window	1	nos
30	door cum window	1	nos
31	door cum window	1	nos
32	door cum window	1	nos
33	door cum window	1	nos
34	door cum window	1	nos
35	door cum window	1	nos
36	door cum window	1	nos
37	door cum window	1	nos
38	door cum window	1	nos
39	door cum window	1	nos
40	door cum window	1	nos
41	door cum window	1	nos
42	door cum window	1	nos
43	door cum window	1	nos
44	door cum window	1	nos
45	door cum window	1	nos
46	door cum window	1	nos
47	door cum window	1	nos
48	door cum window	1	nos
49	door cum window	1	nos
50	door cum window	1	nos
51	door cum window	1	nos
52	door cum window	1	nos
53	door cum window	1	nos
54	door cum window	1	nos
55	door cum window	1	nos
56	door cum window	1	nos
57	door cum window	1	nos
58	door cum window	1	nos
59	door cum window	1	nos
60	door cum window	1	nos
61	door cum window	1	nos
62	door cum window	1	nos
63	door cum window	1	nos
64	door cum window	1	nos
65	door cum window	1	nos
66	door cum window	1	nos
67	door cum window	1	nos
68	door cum window	1	nos
69	door cum window	1	nos
70	door cum window	1	nos
71	door cum window	1	nos
72	door cum window	1	nos
73	door cum window	1	nos
74	door cum window	1	nos
75	door cum window	1	nos
76	door cum window	1	nos
77	door cum window	1	nos
78	door cum window	1	nos
79	door cum window	1	nos
80	door cum window	1	nos
81	door cum window	1	nos
82	door cum window	1	nos
83	door cum window	1	nos
84	door cum window	1	nos
85	door cum window	1	nos
86	door cum window	1	nos
87	door cum window	1	nos
88	door cum window	1	nos
89	door cum window	1	nos
90	door cum window	1	nos
91	door cum window	1	nos
92	door cum window	1	nos
93	door cum window	1	nos
94	door cum window	1	nos
95	door cum window	1	nos
96	door cum window	1	nos
97	door cum window	1	nos
98	door cum window	1	nos
99	door cum window	1	nos
100	door cum window	1	nos

SPECIFICATIONS:-

FOUNDATIONS
R.C.C. FOOTINGS TO BE LAID OVER BED OF P.C.C. 1:4:8 OVER A SAND CUSHION, BRICK SUPPORTED BY PLINTH BEAM.

SUPER STRUCTURE
BRICK WORK IN CEMENT MORTAR 1:5 MIX.

R.C.C. BEAMS, LINTELS, STAIRS, SLABS, SKY WALKERS ETC. IN 1:2:4 MIX WITH SUITABLE REINFORCEMENT.

FINISHES
MOSAIC TILE FLOORING, WALLS ARE PLASTERED WITH C.M. 1:4 MIX AND PAINTED.

JOINERY
BEST INDIAN TEAK WOOD AND GOOD QUALITY ALUMINIUM EXTRUSION.

REFERENCE
PROPOSED ROAD BOUNDARY

FOR RAJINI HOTELS LTD

AUTHORISED SIGNATORY
SIGNATURE OF ARCHITECT

PRAMOD BALAKRISHNAN
I.A. No. 142, CLASS I
No. 5, THIRD FLOOR, 11, SECOND MAIN ROAD,
HEBBAL NAGAR, ADYAR,
CHENNAI-600 028.

MR. PRAMOD BALAKRISHNAN, P.A.M.D 142

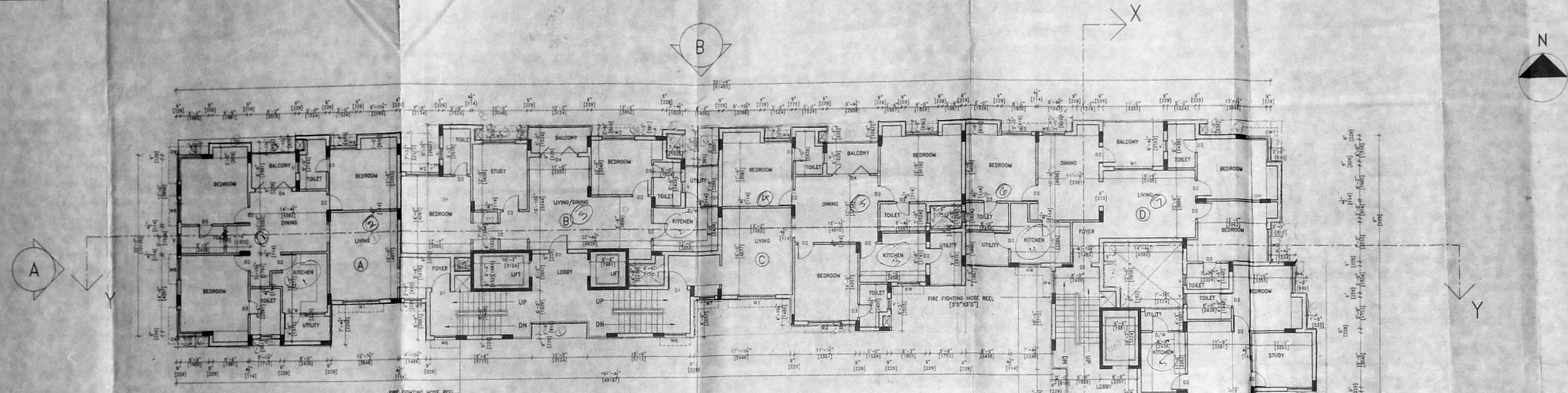
SIGNATURE OF LICENCED SURVEYOR
S. Nagesh

S. NAGESH, B.E., CIVIL, A.S.C.M.B.
CONSULTING ENGINEER,
CLASS I LICENCED SURVEYOR NO. 347
FLAT 8-1, 11, MAIN ROAD,
KASTURIBAI NAGAR, ADYAR,
CHENNAI - 600 028.

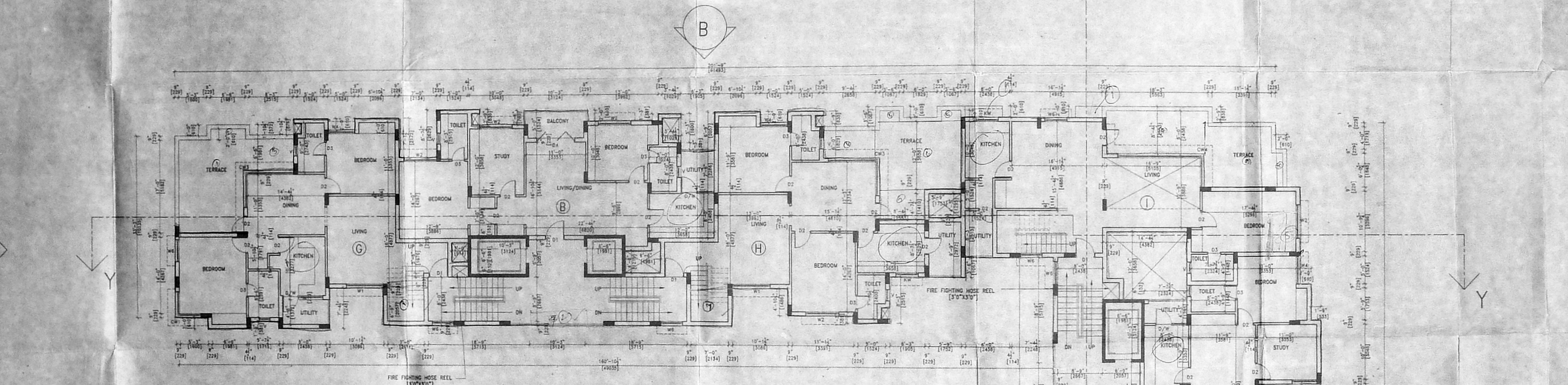
PROJECT
PLAN SHOWING PROPOSED RESIDENTIAL FLATS AT DOOR No. 6&7, SANTHOME HIGH ROAD, SANTHOME CHENNAI - 28.
R.S. No. 2407, 2410/1, 2411, 2414/2, AND 2414/5, BLOCK No. 48
MYLAPORE TRIPPLICANE TALUK,
CHENNAI DISTRICT.

edifice
ARCHITECTURE & INTERIORS
NO. 5, THIRD FLOOR, 11, SECOND MAIN ROAD,
HEBBAL NAGAR, ADYAR, MADRAS - 600 028.
☎ 4412025, 4429841, FAX: 4422198.

PROJ. NO : 513 DRG. NO : C 04
SCALE : 1" = 8'0" REVISIONS
DATE : FEB 2002



TYPICAL FLOOR PLAN
[FIRST TO SEVENTH]



EIGHTH FLOOR PLAN

APPROVED
SUBJECT TO THE CONDITIONS IN
THIS OFFICE LETTER. DATED
22/06/2002 BY
M.V. Srinivasan
FOR MEMBER SECRETARY
CHENNAI M.T.P. PLANNING
DEVELOPMENT AUTHORITY
CHENNAI-600 007

OFFICE COPY

SCHEDULE OF JOINERY

TYPE	DESCRIPTION	W/D	HEI
W1	WINDOW	7'-0"	7'-0"
W2	WINDOW	6'-0"	6'-0"
W3	WINDOW	5'-6"	6'-0"
W4	WINDOW	5'-0"	6'-0"
W5	WINDOW	4'-6"	6'-0"
W6	WINDOW	4'-0"	6'-0"
W7	WINDOW	3'-6"	6'-0"
W8	WINDOW	3'-0"	6'-0"
W9	WINDOW	2'-6"	6'-0"
W10	WINDOW	2'-0"	6'-0"
KW	KITCHEN WINDOW	4'-0"	3'-6"
CW1	CORNER WINDOW	6'-0"	6'-0"
CW2	CORNER WINDOW	11'-6"	6'-0"
CW3	CORNER WINDOW	14'-6"	6'-0"
CW4	CORNER WINDOW	23'-0"	6'-0"
R.S.1	ROLLING SHUTTER	6'-0"	7'-0"
R.S.2	ROLLING SHUTTER	7'-0"	7'-0"
R.S.3	ROLLING SHUTTER	10'-0"	7'-0"

SPECIFICATIONS:-

FOUNDATIONS
R.C.C FOOTINGS TO BE LAID OVER BED OF P.C.C 1:4:8 OVER A SAND CUSHION, BRICK SUPPORTED BY PLINTH BEAM.

SUPER STRUCTURE
BRICK WORK IN CEMENT MORTAR 1:3 MIX.

R.C.C BEAMS, LINTELS, STAIRS, SLABS, SUNSHADES ETC. IN 1:2:4 MIX WITH SUITABLE REINFORCEMENT.

FINISHES
MOSAIC TILE FLOORING. WALLS ARE PLASTERED WITH C.M 1:4 MIX AND PAINTED.

JOINERY
BEST INDIAN TEAK WOOD AND GOOD QUALITY ALUMINIUM EXTRUSION.

CAR PARKING REQUIREMENT

TYPE	NO. OF FLATS	AREA	CAR PARKS REQUIRED/FLAT PARK NUMBER	TOTAL CAR PARKS REQUIRED
FLAT A	7	156.07 SQ M	1	7
FLAT B	9	111.30 SQ M	1	9
FLAT C	7	158.53 SQ M	1	7
FLAT D	7	153.78 SQ M	1	7
FLAT E	9	112.22 SQ M	1	9
FLAT F	7	128.50 SQ M	1	7
FLAT G	1	217.11 SQ M	2	2
FLAT H	1	207.64 SQ M	2	2
FLAT I	1	206.20 SQ M	2	2
FLAT J	1	187.11 SQ M	2	2
TOTAL NO. OF CAR PARKS REQD.				54
TOTAL NO. OF CAR PARKS ACHIEVED				54

REFERENCE

PROPOSED ROAD BOUNDARY

FOR RAJINI HOTELS LTD.

AUTHORISED SIGNATORY

SIGNATURE OF ARCHITECT

PRAMOD BALAKRISHNAN
R.A. No. 142, CLASS 1
NO. 5, THIRD FLOOR, 13, SECOND MAIN ROAD,
NEHRU NAGAR, ADYAR,
CHENNAI-600 020.

MR. PRAMOD BALAKRISHNAN, R.A. NO 142

SIGNATURE OF LICENCED SURVEYOR

S. NAGESH, B.E. CIVIL AND S.M.TE
CONSULTING ENGINEER
CLASS LICENSED SURVEYOR NO. 312
KASTURIBAI NAGAR, ADYAR,
CHENNAI - 600 020.

PROJECT

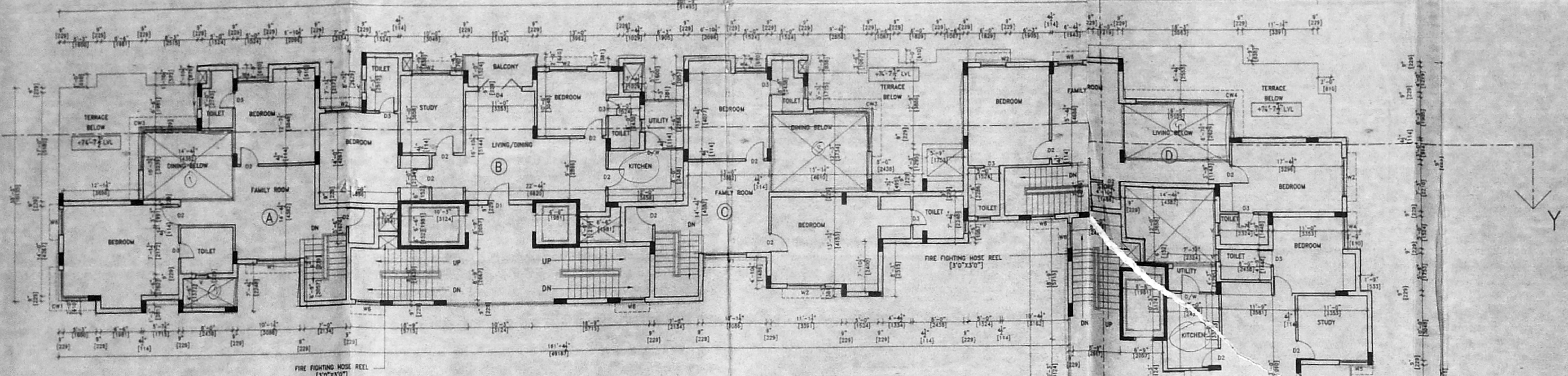
PLAN SHOWING PROPOSED RESIDENTIAL FLATS AT DOOR No. 6&7, SANTHOME HIGH ROAD, SANTHOME CHENNAI - 28. R.S. No. 2407.2410/1, 2411, 2414/2, AND 2414/5, BLOCK No. 4B MYLAPORE TRIPPLICANE TALUK, CHENNAI DISTRICT.

edifice
ARCHITECTURE & INTERIORS
NO. 5, THIRD FLOOR, 13, SECOND STREET,
NEHRU NAGAR, ADYAR, MADRAS - 600 020.
☎ 4412025, 4425941, ☎ FAX: 4422198.

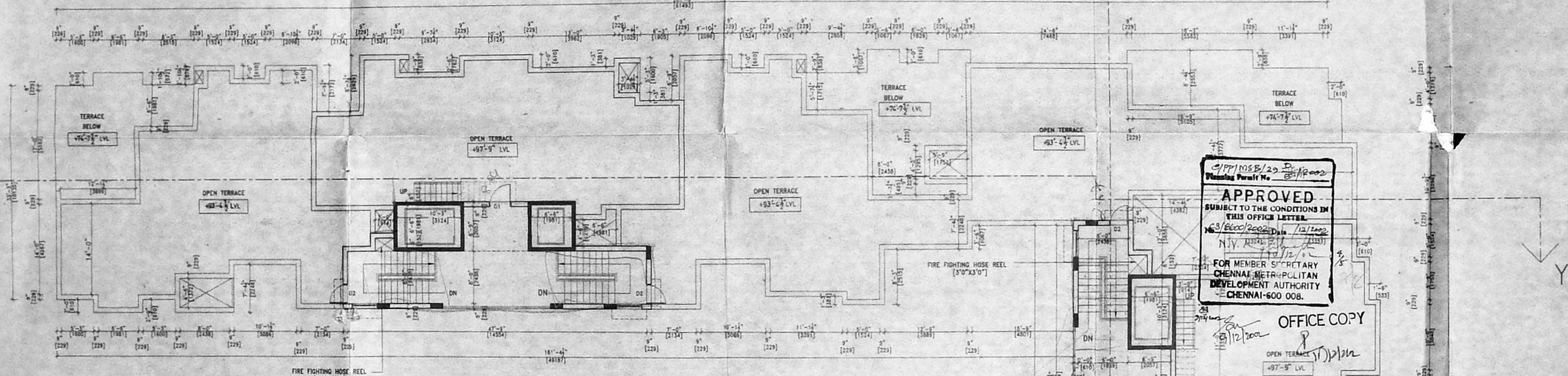
PROJ NO : 513 DRC NO : C 02

SCALE : 1" TO 8'0"

DATE : FEB '2002



NINTH FLOOR PLAN



TERRACE FLOOR PLAN

APPROVED
 SUBJECT TO THE CONDITIONS IN
 THE OFFICE LETTER
 NO. 1000/2002/1/12/2002
 NY 2002/2/1/12/2002
 FOR MEMBER SECRETARY
 CHENNAI METROPOLITAN
 DEVELOPMENT AUTHORITY
 CHENNAI-600 006.

OFFICE COPY

SCHEDULE OF JOINERY:-

TYPE	DESCRIPTION	WID	HET
D1	DOOR	3'-0"	7'-0"
D2	DOOR	3'-0"	7'-0"
D3	DOOR	2'-8"	7'-0"
D4	DOOR	7'-0"	7'-0"
D/W	DOOR CUM WINDOW	7'-0"	7'-0"
W1	WINDOW	7'-0"	6'-0"
W2	WINDOW	6'-0"	6'-0"
W3	WINDOW	5'-0"	6'-0"
W4	WINDOW	5'-0"	6'-0"
W5	WINDOW	4'-0"	6'-0"
W6	WINDOW	4'-0"	6'-0"
W7	WINDOW	3'-0"	6'-0"
W8	WINDOW	3'-0"	6'-0"
W9	WINDOW	4'-0"	6'-0"
W10	WINDOW	4'-0"	6'-0"
KW	KITCHEN WINDOW	4'-0"	3'-0"
CW1	CORNER WINDOW	3'-0"	6'-0"
CW2	CORNER WINDOW	11'-0"	6'-0"
CW3	CORNER WINDOW	14'-0"	6'-0"
CW4	CORNER WINDOW	20'-0"	6'-0"
R.S.1	ROLLING SHUTTER	6'-0"	7'-0"
R.S.2	ROLLING SHUTTER	7'-0"	7'-0"
R.S.3	ROLLING SHUTTER	10'-0"	7'-0"

SPECIFICATIONS:-

FOUNDATIONS
 R.C.C. FOOTINGS TO BE LAID OVER RED OF P.C.C 1:4:8 OVER A SAND CUSHION BRICK SUPPORTED BY PLINTH BEAM.

SUPER STRUCTURE
 BRICK WORK IN CEMENT MORTAR 1:5 MIX.

R.C.C.
 BEAMS, LINTELS, STAIRS, SLABS, SUNSHADES ETC. IN 1:2:4 MIX WITH SUITABLE REINFORCEMENT.

FINISHES
 MOSAIC TILE FLOORING. WALLS ARE PLASTERED WITH C.M 1:4 MIX AND PAINTED.

JOINERY
 BEST INDIAN TEAK WOOD AND GOOD QUALITY ALUMINIUM EXTRUSION.

REFERENCE
 PROJECT NO. **CMDA C/P/P No. 1**
 ROAD NO. **C.No. 691/1/2002**
 BOUNDARY
 PLAN
 FOR **RAMM HOTEL LTD.**
 PART II
 A.P. 10/10/2002

AUTHORISED SIGNATORY

SIGNATURE OF ARCHITECT
 PRAMOD BALAKRISHNAN
 R.A. NO. 142, CLASS I
 NO. 3, THIRD FLOOR, 13, SECOND STREET,
 NEHRU NAGAR, ADYAR,
 CHENNAI-600 020.

MR. PRAMOD BALAKRISHNAN, R.A. NO. 142

SIGNATURE OF LICENCED SURVEYOR
 S. NAGESH, B.E. (CIVIL), A.S.M.S.
 CONSULTING ENGINEER
 CLASS-I, LICENSE NO. 367,
 PLAT B-1, 20, THE PARKS ROAD,
 KASTURIBAI NAGAR, ADYAR,
 CHENNAI - 600 020.

PROJECT

PLAN SHOWING PROPOSED RESIDENTIAL FLATS AT DOOR NO. 6&7, SANTHOME HIGH ROAD, SANTHOME CHENNAI - 28. R.S. No. 2407, 2410, 2411, 2414/2, AND 2414/5, BLOCK No. 48, MYLAPORE TRIPPLICANE TALUK, CHENNAI DISTRICT.

edifice
 ARCHITECTURE & INTERIORS
 NO.5, THIRD FLOOR, 13, SECOND STREET,
 NEHRU NAGAR, ADYAR, MADRAS - 600 020.
 ☎ 4412025, 4425941. FAX: 4422198.

PROJ NO : 513 DRG NO : C-03
 SCALE : 1" TO 6'0" REVISIONS
 DATE : FEB 2002

OVER HEAD WATER TANK ABOVE FOR
FIRE FIGHTING PURPOSE - 14,560 LTR CAPACITY
(SCIENTIFICALLY CLOSED)

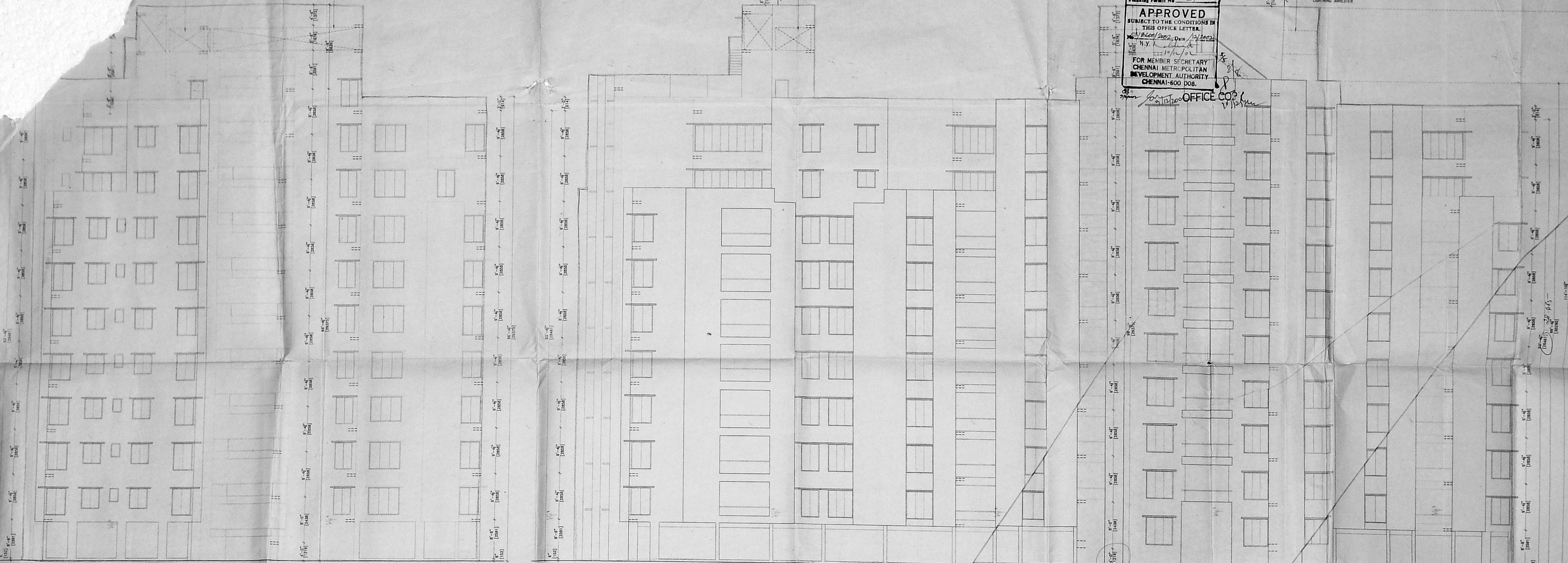
OVER HEAD WATER TANK ABOVE FOR
FIRE FIGHTING PURPOSE - 14,560 LTR CAPACITY
(SCIENTIFICALLY CLOSED)

OVER HEAD WATER TANK ABOVE FOR
FIRE FIGHTING PURPOSE - 14,560 LTR CAPACITY
(SCIENTIFICALLY CLOSED)

OVER HEAD WATER TANK ABOVE FOR
FIRE FIGHTING PURPOSE - 14,560 LTR CAPACITY
(SCIENTIFICALLY CLOSED)

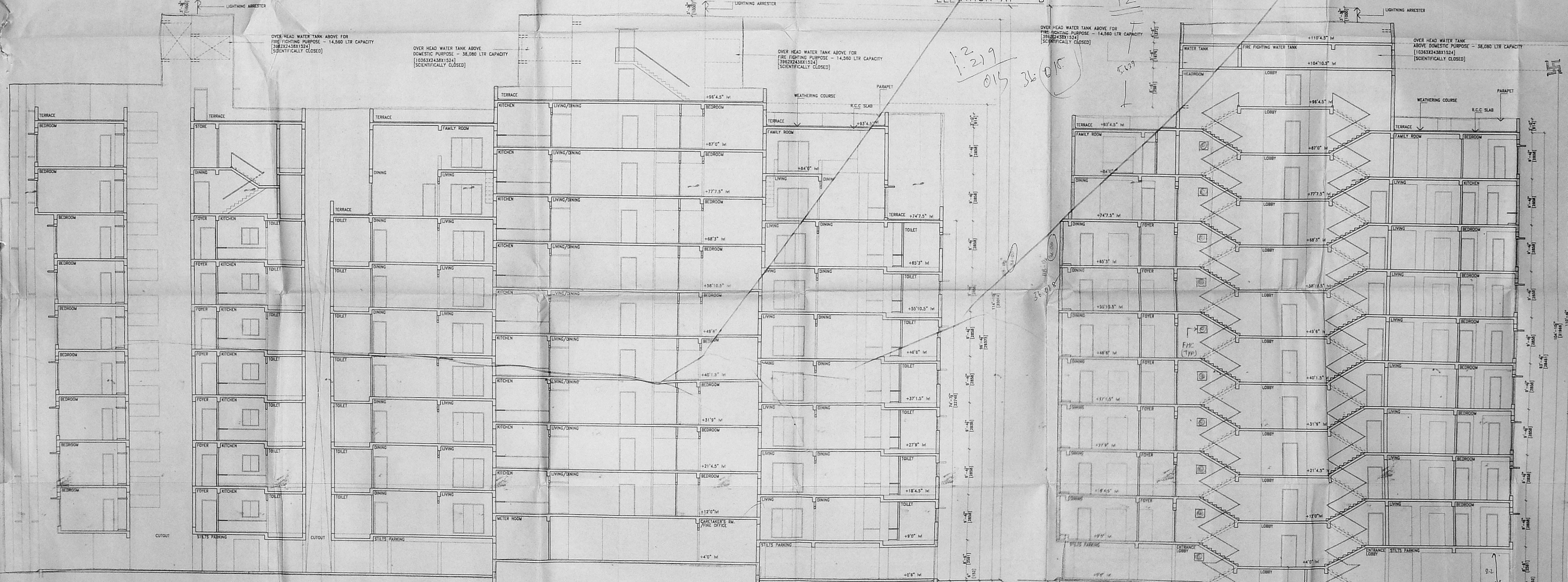
APPROVED
SUBJECT TO THE CONDITIONS IN
THIS OFFICE LETTER
No. 1008/2002, Dated 12/12/2002
FOR MEMBER SECRETARY
CHENNAI METROPOLITAN
DEVELOPMENT AUTHORITY
CHENNAI-600 008.

CMDA 'CS/PP No. 1
C. No. 03/Bacc/2002
PART I
PART II
A.P. D.P.



ELEVATION AT - A

ELEVATION AT - B



SECTION AT - YY

SECTION AT - XX

FIC : FIRE INLE CABINET (TYP)
COMPRISING OF 63 g TWIN HERRING
LANDING VALVE 2 LENGTH OF 63 g
C.P. HOSE 7.5 M LONG - 19 MM Ø RUBBER
HOSE REEL 15M LONG WITH NS DRUM

REFERENCE
PROPOSED
ROAD
BOUNDARY

FOR RAJINI HOTELS LTD.

S. Nagesh
AUTHORISED SIGNATORY
SIGNATURE OF ARCHITECT
PRAMOD BALAKRISHNAN
R.A. No. 142, CLASS I
No. 3, THIRD FLOOR, 13, SECOND STREET,
NEHRU NAGAR, ADYAR,
CHENNAI-600 020.

MR. PRAMOD BALAKRISHNAN, R.A. NO. 142

SIGNATURE OF LICENCED SURVEYOR
S. Nagesh
S. NAGESH, R.E. (CIVIL) M.A.S.C.M.E.
CONSULTING ENGINEER
CLASS I LICENCED SURVEYOR NO. 317
FLAT B-1, 20, 2ND MAIN ROAD,
MASTHIBAT NAGAR, ADYAR,
CHENNAI - 600 020.

PROJECT
PLAN SHOWING PROPOSED RESIDENTIAL
FLATS AT DOOR No. 6&7, SANTHOME
HIGH ROAD, MYLAPORE, CHENNAI - 4
R.S. No. 2407, 2410/1, 2411, 2414/2, AND
2414/5, BLOCK No. 4B
MYLAPORE TRIPPLICANE TALUK,
CHENNAI DISTRICT.

edifice
ARCHITECTURE & INTERIORS
NO. 5, THIRD FLOOR, 13, SECOND STREET,
NEHRU NAGAR, ADYAR, MADRAS - 600 020.
P. : 4412025, 4425941., FAX: 4422198.

PROJ NO : 513
SCALE : 1" TO 810"
DATE : FEB 2002
DRG NO : C 05
REVISIONS